



Oakio Plastic Wood Building Materials Co.,Ltd.

35th floor, Building 3, Huamao Building, No.11
Wenchang 1st Road, Huizhou, Guangdong, China
Tel: +86 (752) 2222-845
Web: www.oakio.com
Email: info@oakio.com

FIND US ON



For more information, visit www.oakio.com



DESIGNED FOR LIVING
BUILT TO LAST

Manufacturer of Eco-Friendly Wood Plastic Composites Product



WOOD PLASTIC COMPOSITE

Table of Contents

Discover More

01-04 Who We Area

Products

05-10 Iniwood Cladding
11-16 Proshield Cladding
17-18 Fixing Methods

WHO WE ARE

Designed for living Built to last

Oakio® WPC products have the look and feel of traditional wood, with the added strength, durability and sustainability of a composite material

We Know WPC!

Oakio® WPC is backed by 15-year limited residential warranty on Iniwood Collection and 25-year limited residential warranty on Proshield, Matshield and Elashield Collection. That is how we fulfill our mission of delivering products to help you create the most enduring, durable and enjoyable outdoor living spaces. We are also proud of our continuous conservation and sustainability efforts. Oakio® WPC is made from up to 95 percent recycled materials, saving tens of thousands of trees each year. Oakio® is the industry leader in high-performance wood plastic composite building materials.



Proshield Collection



Iniwood Collection



Designed in USA



Made in China



Environmental Philosophy

Oakio® has always been at the forefront of the green building industry and since our inception in 2009, we have been consistently improving our commitments to the environment.



FSC

Forest Stewardship Council - FSC certification ensures that products come from responsibly managed forests that provide environmental, social and economic benefits. FSC products are optional, standard products are not made by FSC.



LEED

Qualified for LEED Points, up to 95% of the raw materials used to manufacture Oakio® products are sourced within 300 km of our manufacturing facility.



REACH

Oakio® products are all REACH certified which indicates conformity with health, safety and environmental protection standards for products sold within the European Economic Area.



ISO

Our ISO9001 and ISO14001 certification guarantees that our clients get only the best products and service and that the quality of what we offer is constantly and consistently improved.



CE

Oakio® products are all CE certified which indicates conformity with health, safety, and environmental protection standards for products sold within the European Economic Area.

WHO WE ARE

Let's build to last

Craft your WPC products as beautiful and lasting as the memories you'll create on it.

Board-To-Board Colour Variations and touch different

At Oakio® we go to extensive lengths to make our products reflect all of the beauty and nuance of nature. Some of our collections include solid colours while others bear subtle to more pronounced highlights to closely resemble the characteristics of real wood.

Iniwood Collection

The first generation of wood plastic composite (WPC) products. The result is a dense, heavy, and weather resistant products that won't splinter, warp, rot, or split. High quality hard wood fiber (Oak wood) and high density PE resin are the main raw material. Iniwood comes with solid colour, and apart from that, we create 3D embossing wood grain, which makes the colour variegated as well.

Proshield Collection

This is the second generation of WPC products. Designed to reflect the true tones of natural wood, this is our most uniquely variegated line which includes cascading colours. The artisanal, hand-scraped texture has a refined appearance matched with the most advanced design technology available.



Qualifying for FSC

Iniwood Cladding Collection



Oakio® Iniwood scallop cladding in smoke white colour



Iniwood Cladding

Iniwood products are made with a durable composite that stands up to extreme weather conditions and everyday use. More solid under foot for added safety. The composition of Iniwood is 35% of resin, 55% of oak wood fiber and 10% of additive.

- Never have to be sealed, stained or painted
- Weather-resistant and outperform wood alternatives
- With no need to maintain or replace
- Splinters free and crack resistant
- No issues with warping
- 15 years residential warranty

Profile Choices



IPC01

Size: 140x20 mm
Joist span: 350mm



IPC02

Size: 174x21 mm
Joist span: 350 mm



IPC04

Size: 156x21 mm
Joist span: 350 mm

Add-in Options

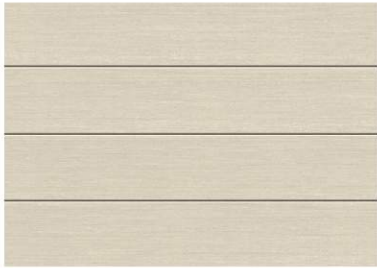
The above profiles, colours and textures are our standard ones, while Oakio provides fully customization, contact Oakio for more at www.oakio.com.

Iniwood cladding colour options

These wood composite collections combine beauty and function. What kind of finishers and colour do you like?

Colour Choices

Solid colour: A single colour without discrete markings



Glacier

Code: IC01



Dune

Code: IC02



Cliff

Code: IC03



Mist

Code: IC04



Canyon

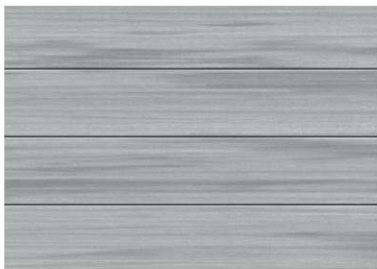
Code: IC05



Plateau

Code: IC06

Variegated colour: Discrete markings of different colours



Smoke White

Code: ICV01



Sunglow

Code: ICV05



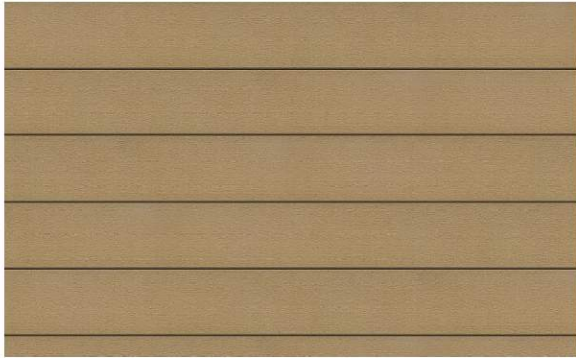
Lava

Code: ICV09

Magnificently durable Iniwood Textures

Iniwood in its aesthetics and resilient in its wear, Iniwood is available in a variety of different finish option that incorporate Iniwood wood grain textures and mimic the look and feel of exotic hardwoods. These beautifully natural textures offer effortless cleaning, complete ease of maintenance and the most advanced moisture, fade resistance technology available today.

Texture Options



IW01



IW02



IWV01



IWV02



IWV03



IWV04



Oakio® Iniwood scollop cladding in dune colour

CLADDING

Proshield Cladding

Oakio® Proshield scollop cladding in lake baikal colour



Proshield Cladding

Proshield Collection is the second generation of Iniwood Collection with Iniwood materials(35% plastic resin, 55% oak wood fiber and 10% additive) as the core and golf ball material as the shield.

This means that it has an advanced premium shield encasing on all four sides around its inner core. Unlike most of the co-extrusion cladding on the market, Proshield cladding is capped by golf material instead of only PE.

- All the advantages of Iniwood and more
- Features a variety of unique variegated Colour and wood grain patterns
- Ultra durable
- No stains, fades, mold or mildew
- Increased scratch resistance
- 25 years residential warranty

Profile Choices



PPC01

Size: 140x12 mm
Joist span: 350 mm



PPC02

Size: 156x21 mm
Joist span: 350 mm



PPC10

Size: 176x26 mm
Joist span: 350 mm

Add-in Options

The above profiles, colours and textures are our standard ones, while Oakio provides fully customization, contact Oakio for more at www.oakio.com.

Proshield Colour and finisher options

These beautiful, natural textures offer effortless cleaning, no maintenance and the most advanced moisture and fade resistance technology available.

Colour Choices



Parthenon

Code: PC01



Angkor

Code: PC02



Petra

Code: PC03



Westminster

Code: PC04



Black Beach

Code: PC05



Chichen Itza

Code: PC06



Taj Mahal

Code: PC07



Lake Baikal

Code: PC08



Colosseum

Code: PC09



Pyramids

Code: PC10



Valensole

Code: PC11



Potala Palace

Code: PC12

Magnificently durable Proshield Textures

Proshield in its aesthetics and resilient in its wear, Proshield is available in a variety of different texture options that incorporate Proshield wood grain textures and mimic the look and feel of exotic hardwoods.

These beautifully natural textures offer effortless cleaning, complete ease-of-maintenance and the most advanced moisture, fade resistance technology available today. What is more, anti-microbial properties make all surfaces germ resistant and hygienic, plus their slip resistance make them barefoot friendly and safe for the whole family.

Texture Options



PW01



PW03



PW04



PW05



PW06



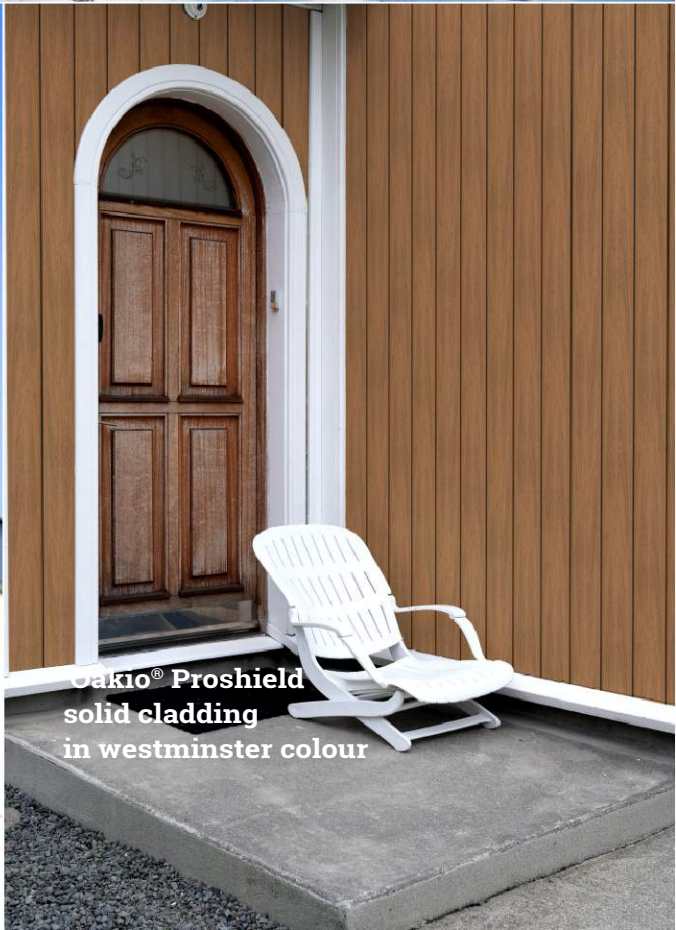
PW07



Oakio® Proshield solid cladding in westminster colour



Oakio® Proshield scallop cladding in petra colour



Oakio® Proshield solid cladding in westminster colour

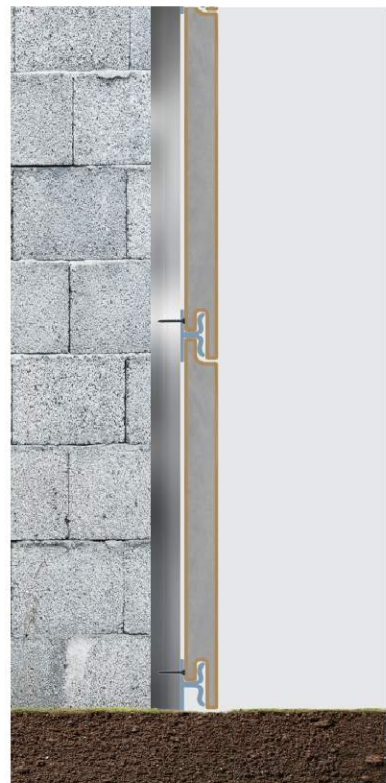
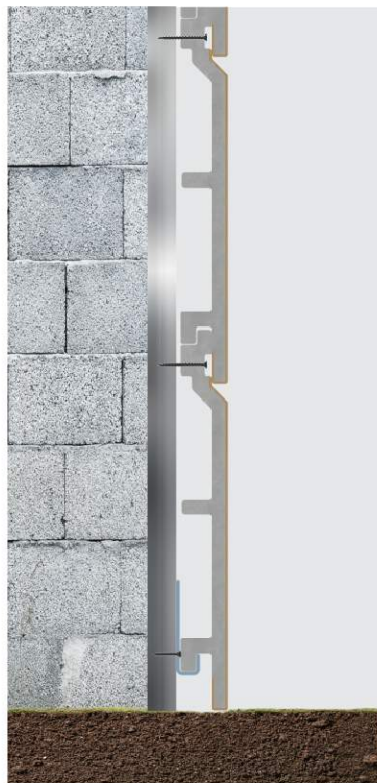


Oakio® Iniwood scallop cladding in glacier colour

Fixing Methods

Clips and screws are the main accessories for cladding.
Visit www.oakio.com for further information.

Fixing Methods



Code: AM04



Code: AS04



Code: AS13