



## **Oakio Plastic Wood Building Materials Co.,Ltd.**

35th floor, Building 3, Huamao Building, No.11  
Wenchang 1st Road, Huizhou, Guangdong, China  
Tel: +86 (752) 2222-845  
Web: [www.oakio.com](http://www.oakio.com)  
Email: [info@oakio.com](mailto:info@oakio.com)

**FIND US ON**



For more information, visit [www.oakio.com](http://www.oakio.com)





# DESIGNED FOR LIVING **BUILT TO LAST**

Manufacturer of Eco-Friendly Wood Plastic Composites Product





WOOD PLASTIC COMPOSITE

# Table of Contents

**Discover More**

01-04    Who We Are

## Products

05-10    Iniwood Cladding  
11-16    Proshield Cladding  
17-18    Fixing Methods

WHO WE ARE

# Designed for living Built to last

Oakio® WPC products have the look and feel of traditional wood, with the added strength, durability and sustainability of a composite material

---

## We Know WPC !

---

Oakio® WPC is backed by 15-year limited residential warranty on Iniwood Collection and 25-year limited residential warranty on Proshield, Matshield and Elashield Collection. That is how we fulfill our mission of delivering products to help you create the most enduring, durable and enjoyable outdoor living spaces. We are also proud of our continuous conservation and sustainability efforts. Oakio® WPC is made from up to 95 percent recycled materials, saving tens of thousands of trees each year. Oakio® is the industry leader in high-performance wood plastic composite building materials.



Proshield Collection



Iniwood Collection



Designed in USA



Made in China





# Environmental Philosophy

Oakio® has always been at the forefront of the green building industry and since our inception in 2009, we have been consistently improving our commitments to the environment.



## FSC

Forest Stewardship Council - FSC certification ensures that products come from responsibly managed forests that provide environmental, social and economic benefits. FSC products are optional, standard products are not made by FSC.



## LEED

Qualified for LEED Points, up to 95% of the raw materials used to manufacture Oakio® products are sourced within 300 km of our manufacturing facility.



## REACH

Oakio® products are all REACH certified which indicates conformity with health, safety and environmental protection standards for products sold within the European Economic Area.



## ISO

Our ISO9001 and ISO14001 certification guarantees that our clients get only the best products and service and that the quality of what we offer is constantly and consistently improved.



## CE

Oakio® products are all CE certified which indicates conformity with health, safety, and environmental protection standards for products sold within the European Economic Area.

WHO WE ARE

# Let's build to last

Craft your WPC products as beautiful and lasting as the memories you'll create on it.

## Board-To-Board Colour Variations and touch different

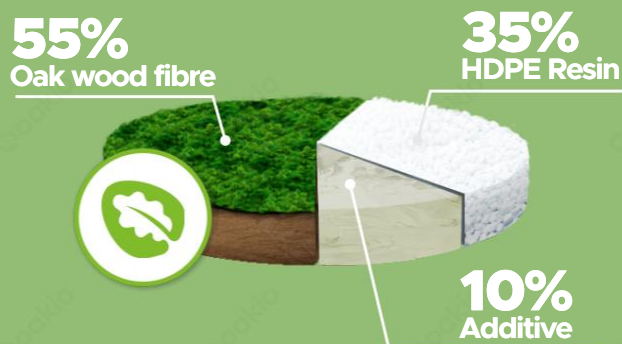
At Oakio® we go to extensive lengths to make our products reflect all of the beauty and nuance of nature. Some of our collections include solid colours while others bear subtle to more pronounced highlights to closely resemble the characteristics of real wood.

### Iniwood Collection

The first generation of wood plastic composite (WPC) products. The result is a dense, heavy, and weather resistant products that won't splinter, warp, rot, or split. High quality hard wood fiber (Oak wood) and high density PE resin are the main raw material. Iniwood comes with solid colour, and apart from that, we create 3D embossing wood grain, which makes the colour variegated as well.

### Proshield Collection

This is the second generation of WPC products. Designed to reflect the true tones of natural wood, this is our most uniquely variegated line which includes cascading colours. The artisanal, hand-scraped texture has a refined appearance matched with the most advanced design technology available.



Qualifying for FSC



# Iniwood Cladding Collection

Oakio® Iniwood scallop cladding in plateau colour.







# Iniwood Cladding

Iniwood is crafted from a durable wood-plastic composite that withstands harsh weather and everyday wear. Its solid construction provides a sturdy, secure feel underfoot. It consists of 55% oak wood fiber, 35% resin, and 10% additives.

- No sealing, staining, or painting required
- Resistant to weather, fading, and warping
- No need for frequent repairs or replacement
- Splinter-free and crack-resistant
- Outperform wood alternatives
- 15-year residential warranty

## Profile Choices



**IPC01**

Size: 140x20 mm  
Joist span: 350mm



**IPC02**

Size: 174x21 mm  
Joist span: 350 mm



**IPC04**

Size: 156x21 mm  
Joist span: 350 mm

## Add-in Options

The profiles, colours, and textures shown above are our standard options. Oakio also offers full customization, contact us for more at [www.oakio.com](http://www.oakio.com).

# Iniwood Cladding Colour Options

These wood plastic composite collections combine beauty and function. What kind of finish and colour do you like?

## Colour Choices

### Solid Colour: A Single Colour Without Discrete Markings



**Glacier**  
Code: IC01



**Dune**  
Code: IC02



**Cliff**  
Code: IC03



**Mist**  
Code: IC04

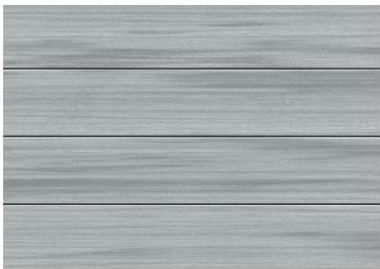


**Canyon**  
Code: IC05



**Plateau**  
Code: IC06

### Variegated Colour: Discrete Markings Of Different Colours



**Smoke White**  
Code: ICV01



**Sunglow**  
Code: ICV05



**Lava**  
Code: ICV09



## Magnificently Durable Iniwood Textures

Iniwood features a range of wood grain finishes that mimic the look and feel of exotic hardwoods. Easy to clean, low-maintenance, and built with advanced moisture and fade resistance for long-lasting durability.

### Texture Options



**Code: IW01** | Sanding surface | 942mm Repeat



**Code: IW02** | Light Embossing | 942mm Repeat



**Code: IWV01** | 3D Embossing | 942mm Repeat



**Code: IWV02** | 3D Embossing | 942mm Repeat



**Code: IWW03** | 3D Embossing | 942mm Repeat



**Code: IWW04** | 3D Embossing | 1256mm Repeat

---

### Add-in Options

---

The profiles, colours, and textures shown above are our standard options. Oakio also offers full customization, contact us for more at [www.oakio.com](http://www.oakio.com).



# Proshield Cladding

Oakio® Proshieldscallop cladding in westminster colour





# Proshield Cladding

Proshield Collection is the second generation of Iniwood Collection with Iniwood materials (35% plastic resin, 55% oak wood fiber and 10% additive) as the core and golf ball material as the shield.

This means that it has an advanced premium shield encasing on all four sides around its inner core. Unlike most of the co-extrusion cladding on the market, Proshield cladding is capped by golf material instead of only PE.

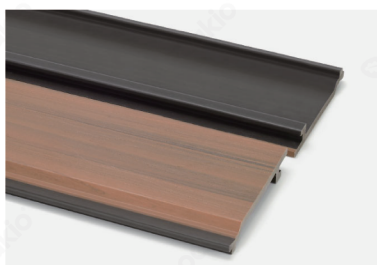
- All the advantages of Iniwood and more
- A variety of unique variegated Colours and wood grain finishes
- Ultra-durable performance
- Resists stains, fading, mold, and mildew
- Enhanced scratch resistance
- 25-year residential warranty

## Profile Choices



**PPC01**

Size: 140x13 mm  
Joist span: 350 mm



**PPC02**

Size: 156x21 mm  
Joist span: 350 mm



**PPC10**

Size: 176x26 mm  
Joist span: 350 mm

## Add-in Options

The profiles, colours, and textures shown above are our standard options. Oakio also offers full customization, contact us for more at [www.oakio.com](http://www.oakio.com).



# Proshield Colour and Finish Options

These beautifully natural textures offer effortless cleaning and require minimal maintenance, while being built with advanced moisture and fade resistance for long-lasting durability.

## Colour Choices



**Parthenon**

Code: PC01



**Angkor**

Code: PC02



**Petra**

Code: PC03



**Westminster**

Code: PC04



**Black Beach**

Code: PC05



**Chichen Itza**

Code: PC06



**Taj Mahal**

Code: PC07



**Lake Baikal**

Code: PC08



**Colosseum**

Code: PC09



**Pyramids**

Code: PC10



**Potala Palace**

Code: PC12



**Casa Batllo**

Code: PC20

## Magnificently Durable Proshield Textures

Proshield features a range of wood grain finishes that mimic the look and feel of exotic hardwoods. Easy to clean, low-maintenance, and built with advanced moisture and fade resistance for long-lasting beauty.

Plus, built-in antimicrobial protection keeps every surface hygienic and germ-resistant, perfect for wall panels that demand both style and durability.

### Texture Options



**Code: PW01** | Sanding surface | 942mm Repeat



**Code: PW03** | 3D Embossing | 942mm Repeat



**Code: PW04** | 3D Embossing | 942mm Repeat



**Code: PW05** | 3D Embossing | 942mm Repeat





**Code: PW06** | 3D Embossing | 942mm Repeat



**Code: PW07** | 3D Embossing | 942mm Repeat



**Code: PW09** | 3D Embossing | 942mm Repeat



**Code: PW10** | 3D Embossing | 942mm Repeat





Oakio® Iniwood scallop cladding in glacier colour

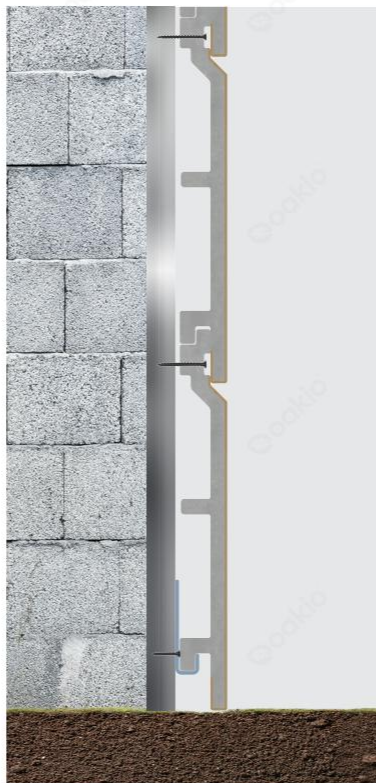
# Fixing Methods

Clips and screws are the main accessories for cladding. Visit [www.oakio.com](http://www.oakio.com) for further information.

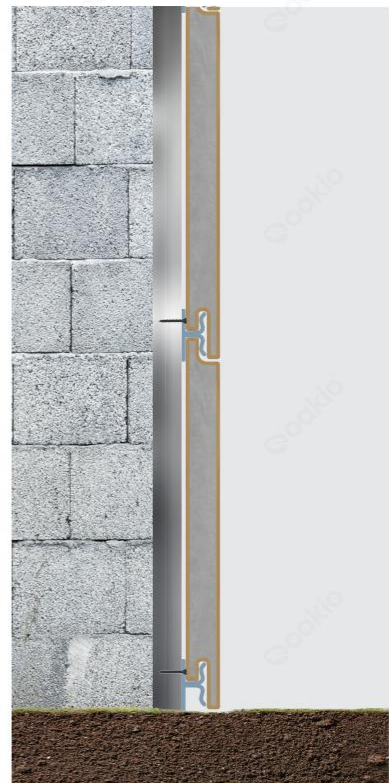
## Fixing Methods



Code: AM04



Code: AS04



Code: AS13