

**Oakio Plastic Wood Building
Materials Co.,Ltd.**

35th Floor, Tower 3, Huamao Place, No.11
Wenchang 1st Road, Huizhou, Guangdong, China
Tel: +86 (752) 2222-845
Web:www.oakio.com
Email:info@oakio.com



V20250626

WPC Cladding

Installation Guide



FIND
US ON



V20250626

Read All Sections Before You Install

To get latest information, please visit our website: [www. Oakio.com](http://www.Oakio.com).

This installation guideline outlines Oakio's recommended methods for installing our products. While intended to be comprehensive, it may not cover every unique scenario. Installers remain responsible for choosing the method that best meets their project's performance requirements. Oakio strongly recommends that all designs be reviewed and approved by a licensed architect, engineer, or local building official. Always verify that your plans comply with local building codes before you begin the installation.

Safety

Appropriate safety equipment is essential for any construction project. Oakio strongly recommends the use of the following protective gear (but not limited to): gloves, respiratory protection, long sleeves, pants, and safety glasses.

Planning Ahead

To determine the amount of Oakio cladding material needed, first calculate the wall surface area by multiplying its length by its width. Next, add approximately 10% to account for waste. Before installing, plan your cladding layout to ensure the best appearance. Because cladding permanently attached to the ground or the house is subject to local building codes and zoning ordinances, most installations require permits and inspections from the local building department. We recommend creating a site plan for your project to minimize errors and achieve a flawless wall cladding finish.

Expansion and Contraction

Oakio cladding planks expand and contract with temperature fluctuations—especially under extreme heat or cold. These length changes are most pronounced during installation: for example, planks cut on a hot afternoon will contract noticeably if left outdoors overnight in cooler air before fitting the next morning. To minimize movement, cut each plank and fasten it as soon as possible.

Environment

Ensure your installation surface is clean, smooth, flat, and structurally sound before fitting any Oakio products. If your project timeline allows, verify that your plans comply with local building codes before you begin installing cladding.

Read All Sections Before You Install

To get latest information, please visit our website: [www. Oakio.com](http://www.Oakio.com).

Tools

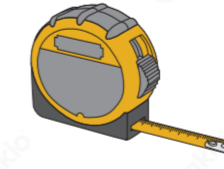
The tools you need for this installation are illustrated below:



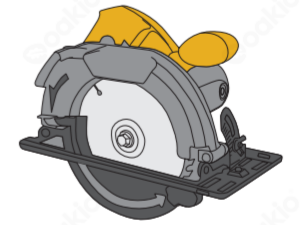
Electric Drill



Guiding Rule



Tape Measure



Saw

Note

1. Trims are optional. Choose trims that suit your aesthetic preferences.
2. Always install and secure joists before fitting the cladding to ensure structural safety.
3. Use an electric drill to pre-drill holes in each WPC board at the exact locations where screws will be inserted.
4. Fix every cladding joint with screws. We recommend preparing extra screws to account for any adjustments or replacements.

Clips



Starter Clip

Code: AM02
Size: 28 x 25mm
Depth of slot: 7.5mm



Connecting Clip

Code: AM43
Size: 45 x 15.2mm
Depth of slot: 7mm

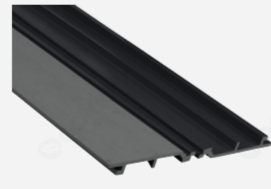
Read All Sections Before You Install

To get latest information, please visit our website: [www. Oakio.com](http://www.Oakio.com).

Profiles



Iniwood Cladding
Model: 
Code: IPC04
Size: 156x21mm



Iniwood Cladding
Model: 
Code: IPC02
Size: 174x21mm



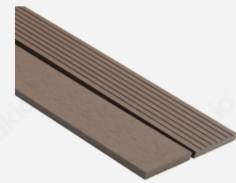
Proshield Cladding
Model: 
Code: PPC02
Size: 156x21mm




Proshield Cladding
Model: 
Code: PPC05
Size: 174x21.5mm

Trim

Note: You can determine your own trim according to your preference.




Iniwood trim
Model: 
Code: IPF01
Size: 71x11mm



Iniwood trim
Model: 
Code: IPF15
Size: 65x65mm



Proshield trim
Model: 
Code: PPF01
Size: 71x11mm



Proshield trim
Model: 
Code: PPF03
Size: 50x50mm



Proshield trim
Model: 
Code: PPF24
Size: 22.2x22.2mm

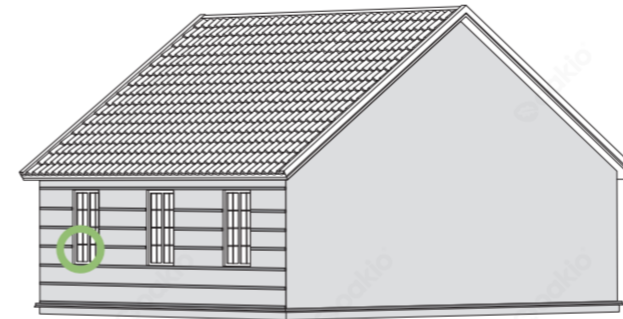
Oakio Cladding Installation Instructions - Vertical Version

NOTE: IPC04 shown below.

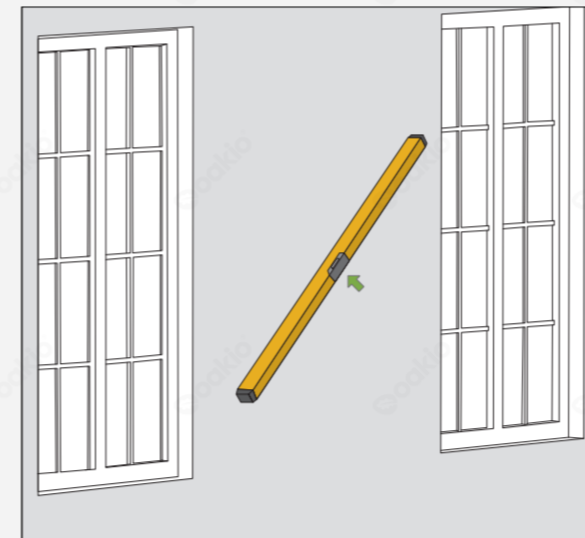


Scallop Cladding

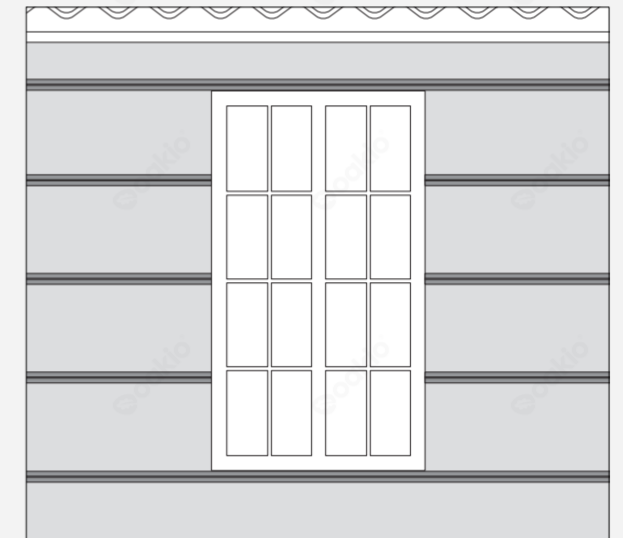
1 Install joists at 40cm on center. Fix the joists with expansion screws.



Note



Make sure that the wall is flat. (You can also use a laser level.)



Make sure that there is a joist next to the window side.

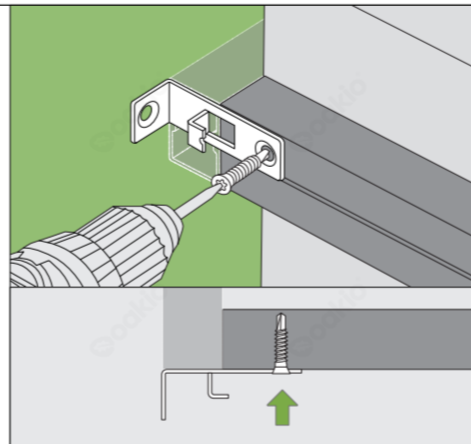
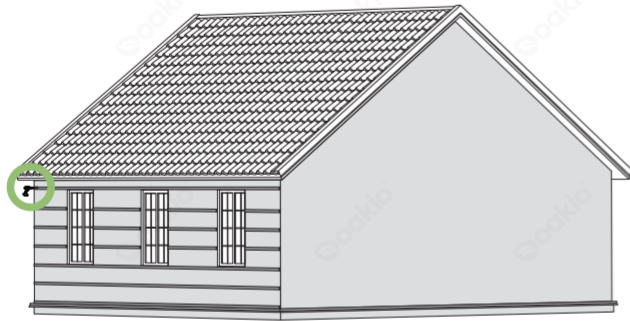
Oakio Cladding Installation Instructions - Vertical Version

NOTE: IPC04 shown below.

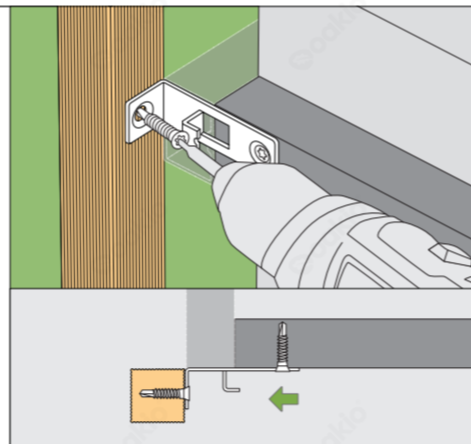
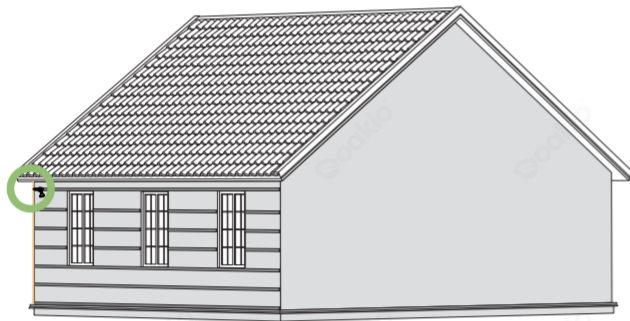


Scallop Cladding

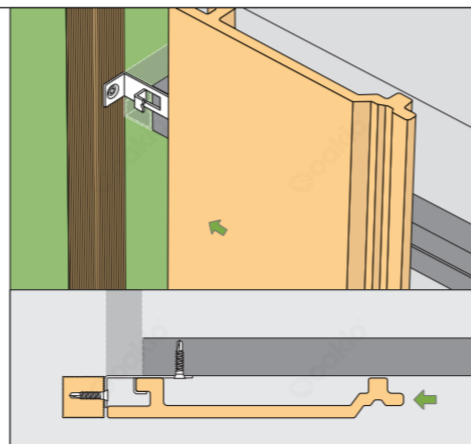
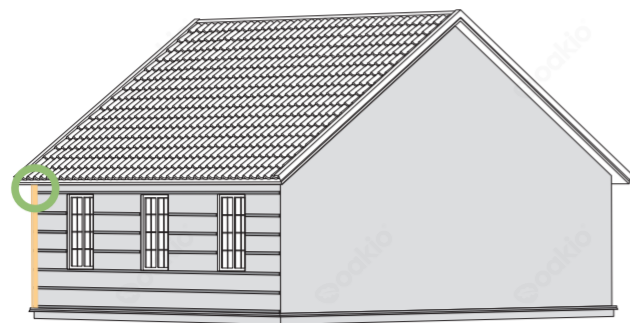
2 Attach connecting clip on the joist and fix by screws.



3 Install the edge trim, fixing it to the left side of the clip.



4 Install the cladding and hook tightly into the clip.



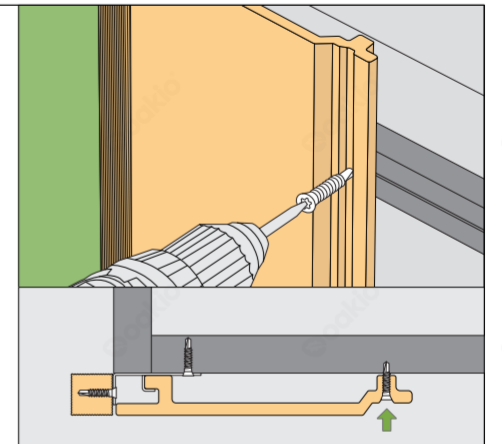
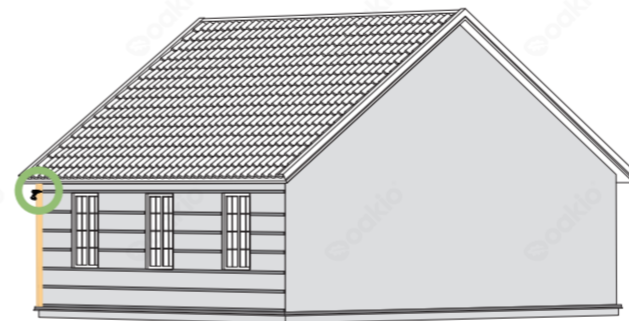
Oakio Cladding Installation Instructions - Vertical Version

NOTE: IPC04 shown below.

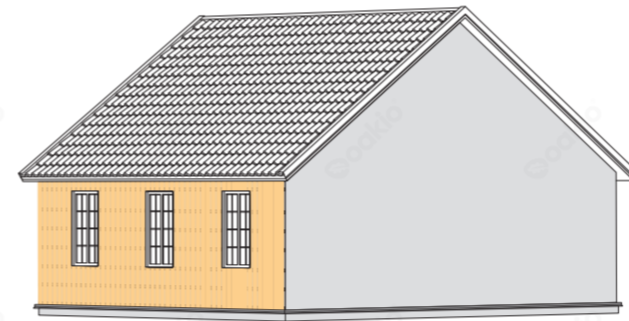


Scallop Cladding

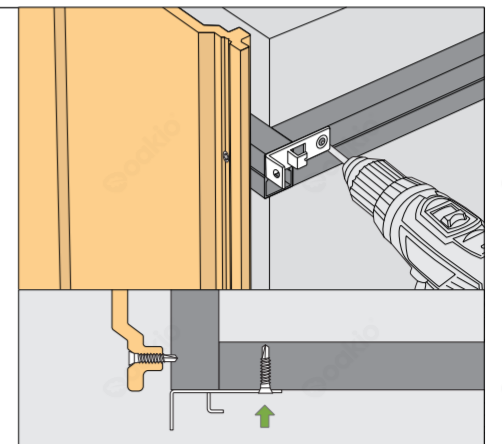
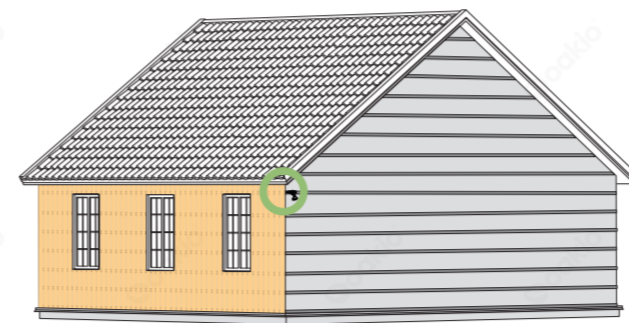
5 Fix the cladding to the joist with screws.



6 Keep installing the cladding as the steps 4 5

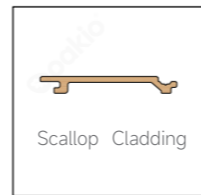


7 Repeat steps 1-5 to install the cladding for the next wall.

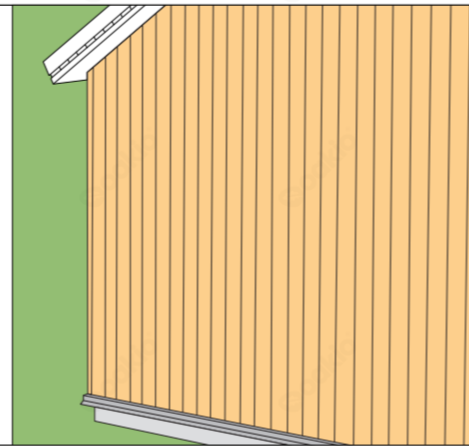
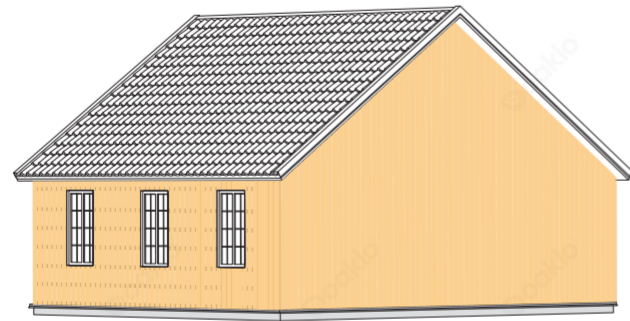


Oakio Cladding Installation Instructions - Vertical Version

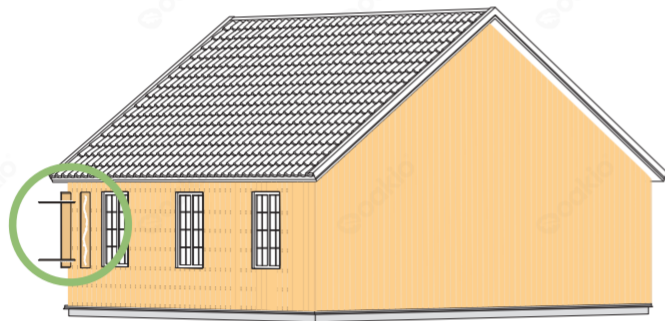
NOTE: IPC04 shown below.



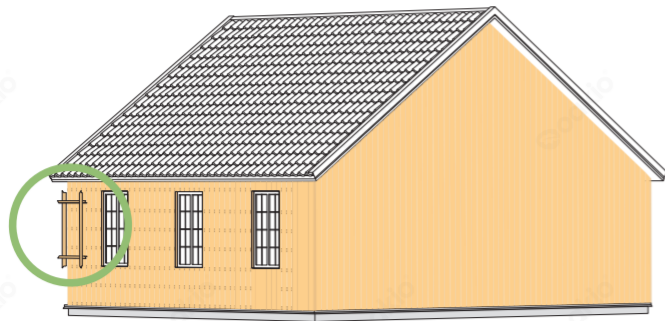
8 Keep installing the cladding as the steps above.



9 Before installing, pad suitable boards for window frame with Styrofoam. Fix the boards on the wall.

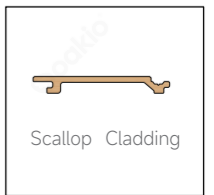


10 Install an L-shaped trim to cover the gap between window frame and cladding. Fix by stainless steel screws.

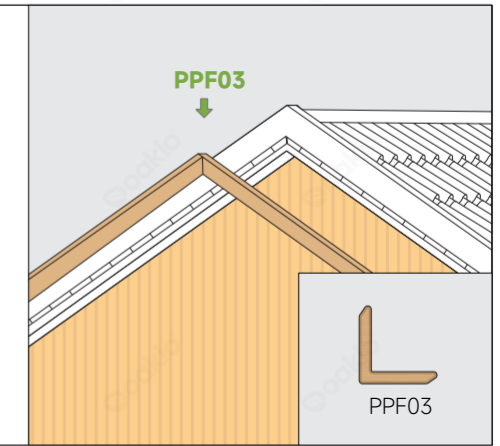
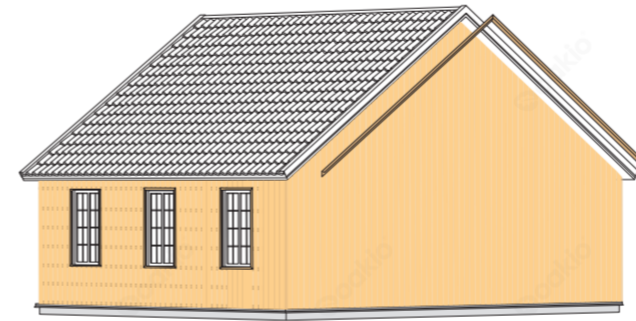


Oakio Cladding Installation Instructions - Vertical Version

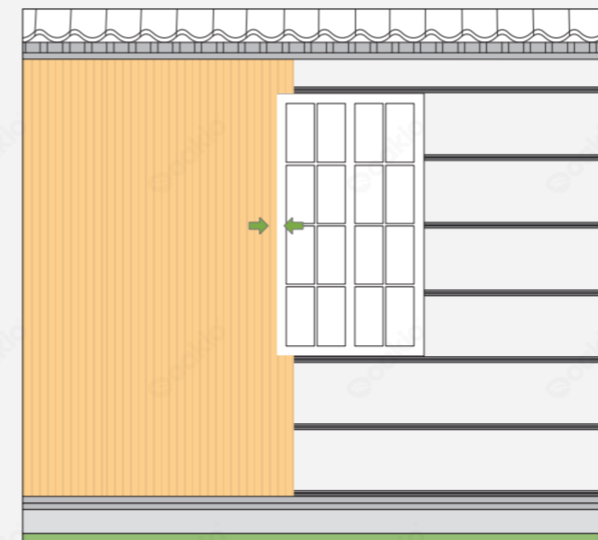
NOTE: IPC04 shown below.



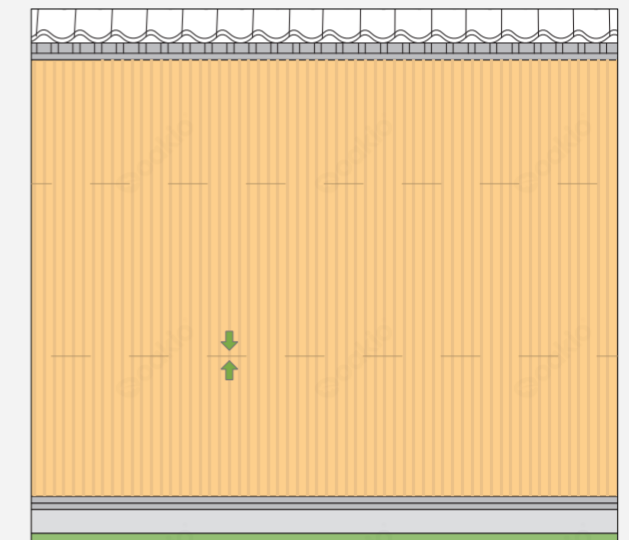
11 Install an L-shaped trim under the roof and fix by screws.



Note



- Cut the cladding to the appropriate size to complete the joint section.



- Leave at least a 3 mm gap between connected boards.

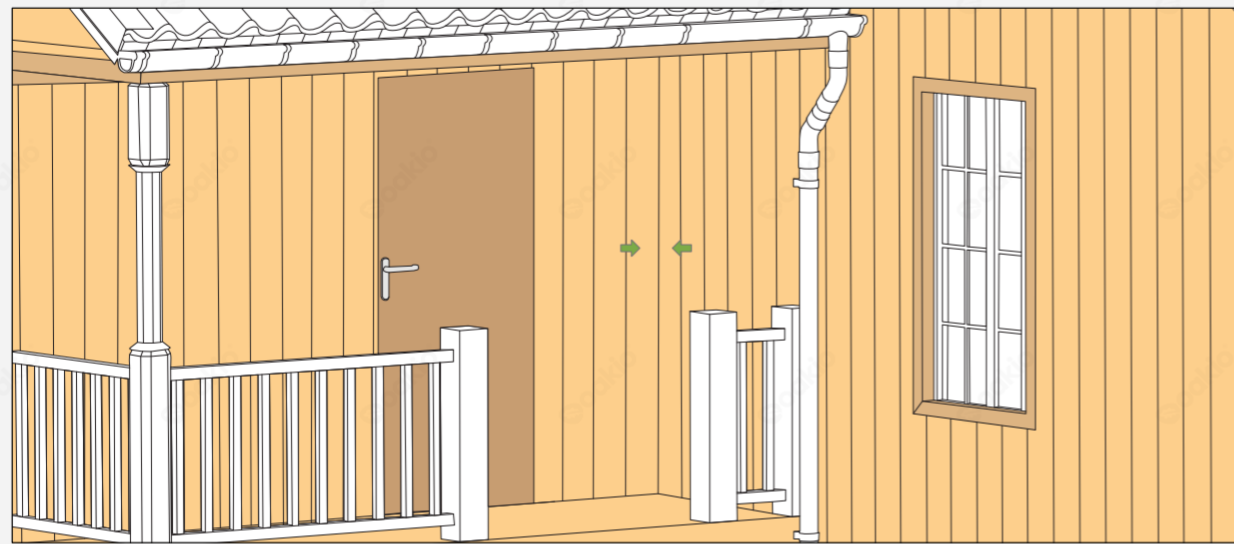
Oakio Cladding Installation Instructions - Vertical Version

NOTE: IPC04 shown below.



Scallop Cladding

Note



- Trims are not required for inner corners. You can simply install the panel crosswise. Ensure there are two joists underneath.

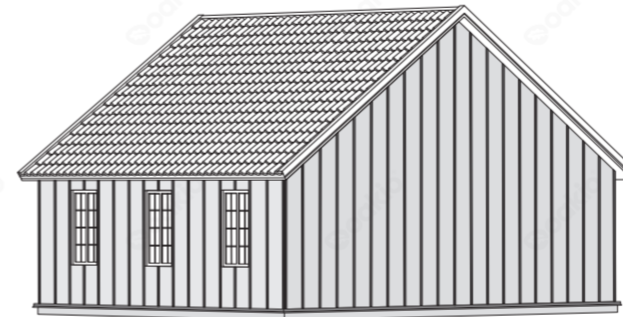
Oakio Cladding Installation Instructions - Horizontal Version

NOTE: IPC04 shown below.

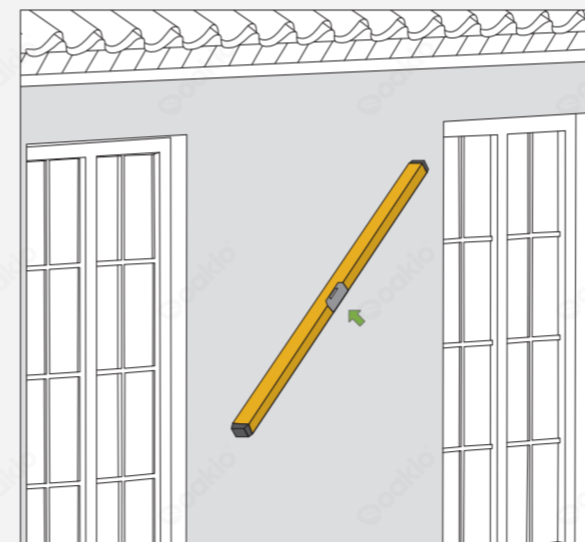


Scallop Cladding

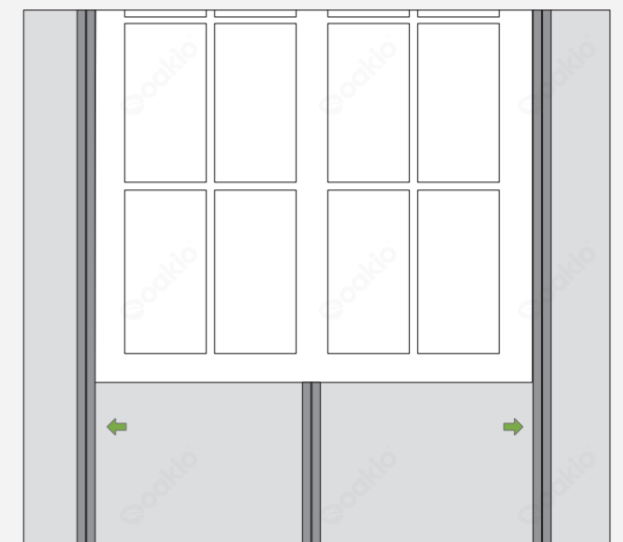
- 1 Install joists at 40cm on center. Fix the joists with expansion screws.



Note



- Make sure the wall is flat.
(You can also use a laser level.)



- Make sure that there is a joist next to the window side.

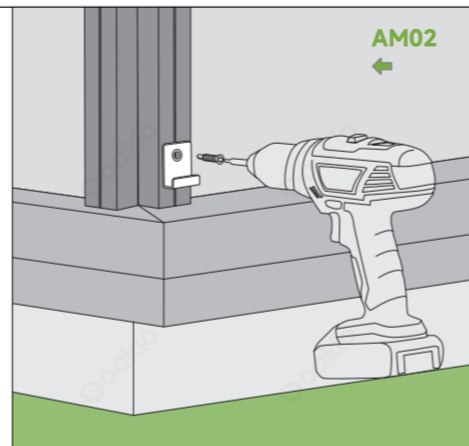
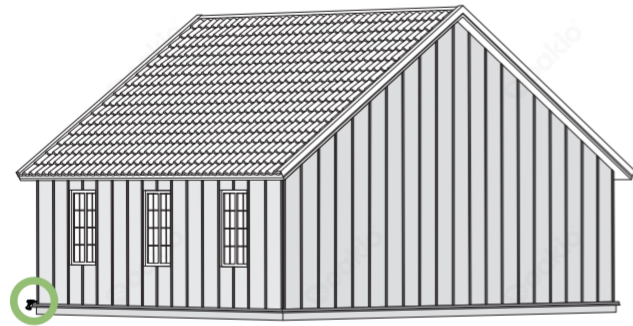
Oakio Cladding Installation Instructions - Horizontal Version

NOTE: IPC04 shown below.

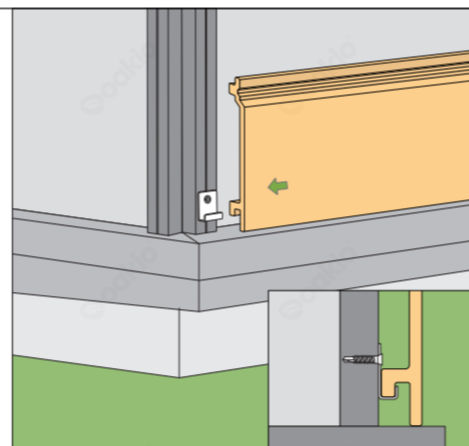
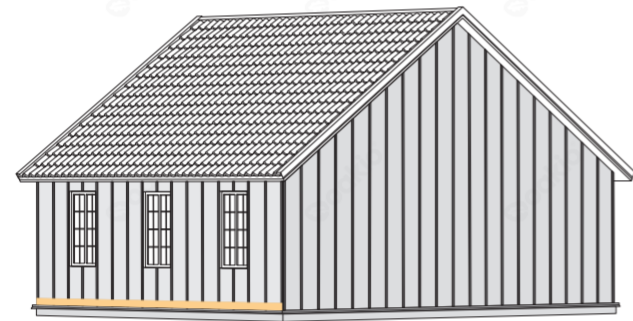


Scallop Cladding

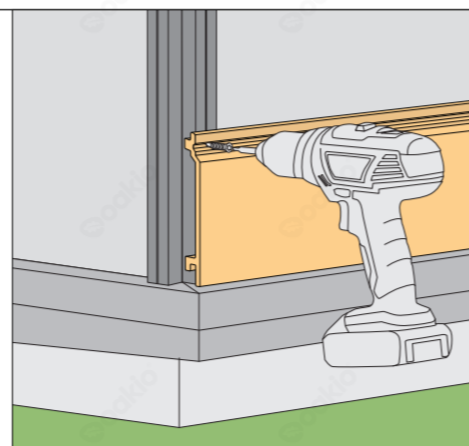
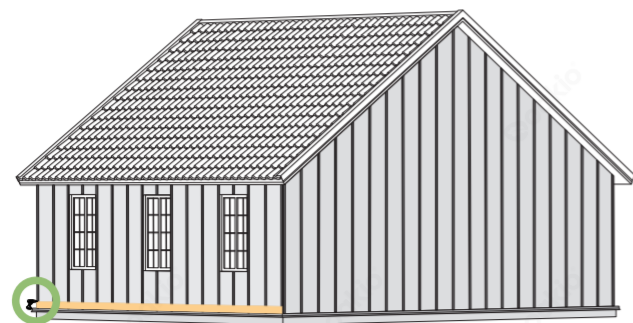
2 Attach starter clip on the joist and fix by screws.



3 Install the cladding and hook tightly into the clip.



4 Fix the cladding to the joist with screws.



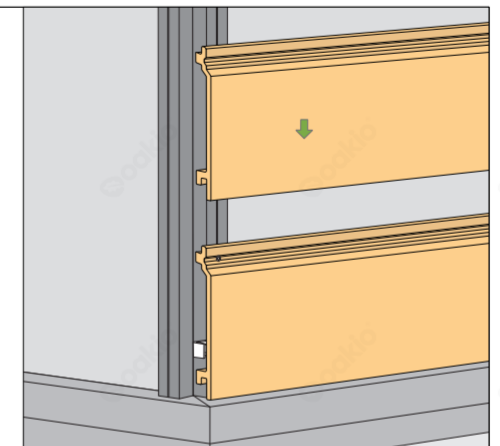
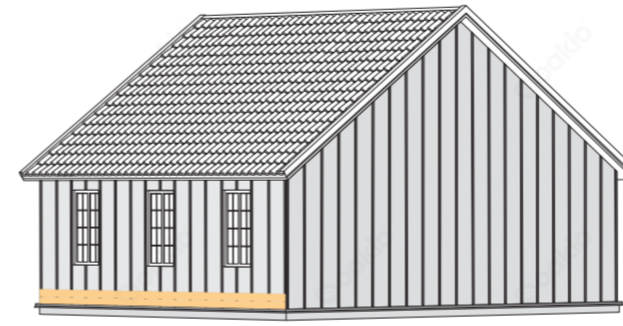
Oakio Cladding Installation Instructions - Horizontal Version

NOTE: IPC04 shown below.

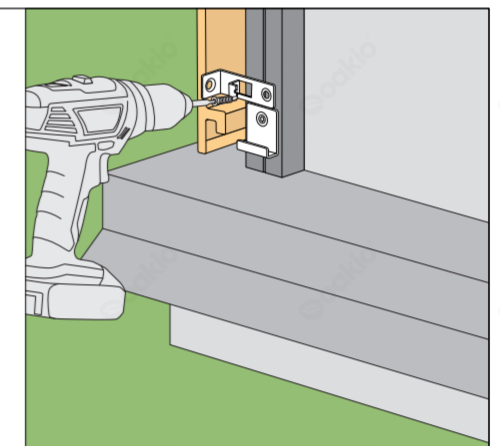
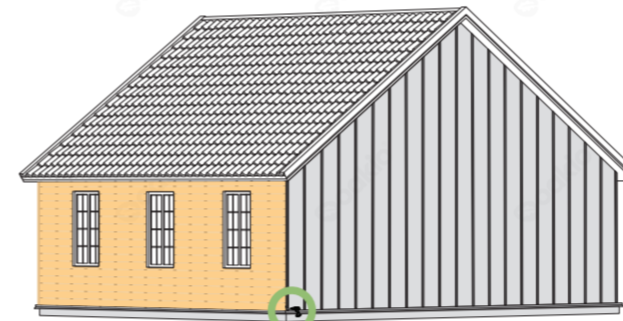


Scallop Cladding

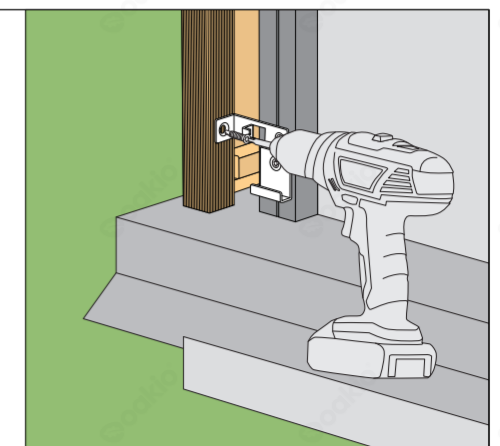
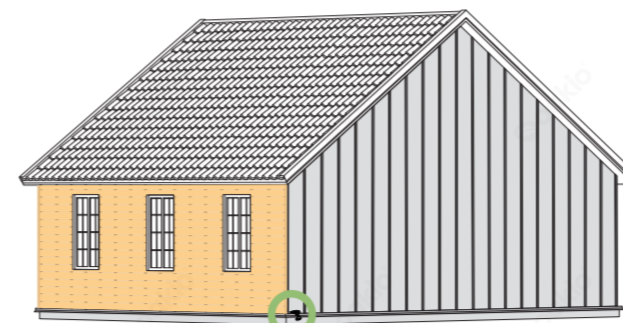
5 Install the cladding tightly with clips.



6 Attach connecting clip on the joist and fix by screws.

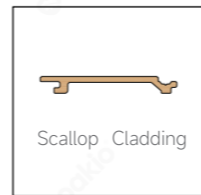


7 Install the edge trim, fixing it to the left side of the clip.

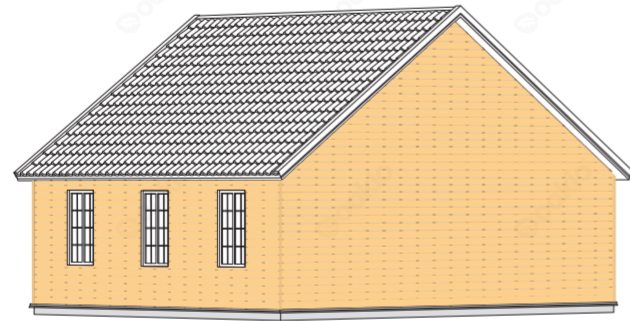


Oakio Cladding Installation Instructions - Horizontal Version

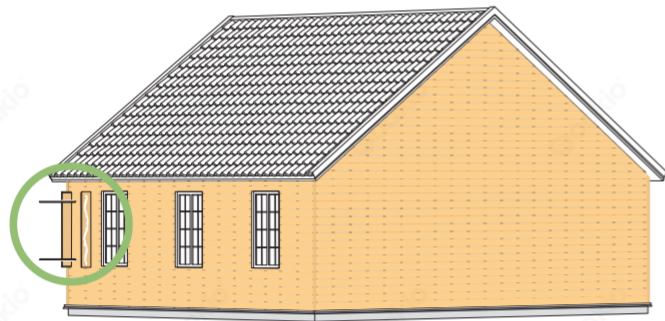
NOTE: IPC04 shown below.



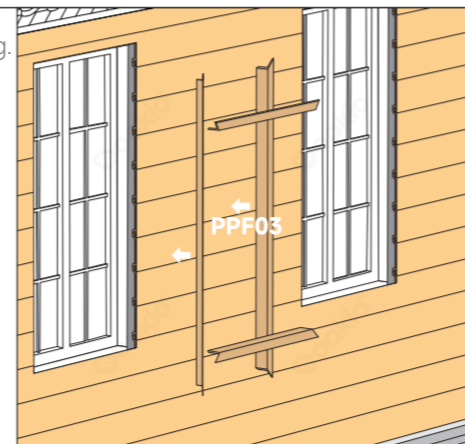
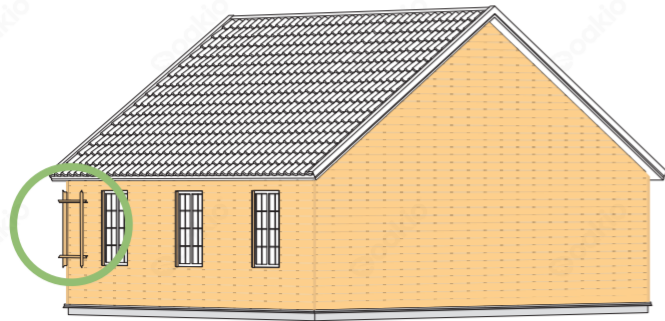
8 Keep installing the cladding as the instruction above.



9 Before installing, pad suitable boards for window frame with Styrofoam. Fix the boards on the wall.

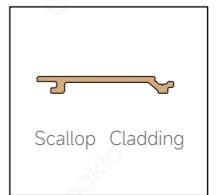


10 Install an L-shaped trim to cover the gap between window frame and cladding. Fix by stainless steel screws.

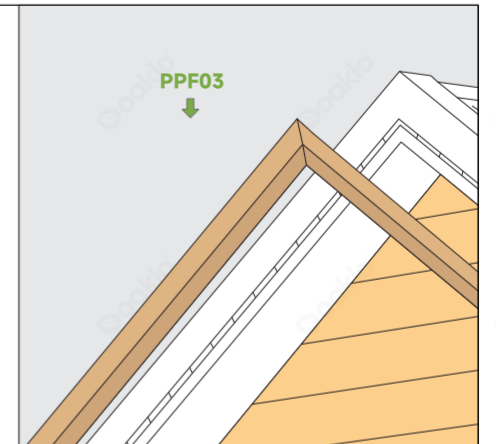
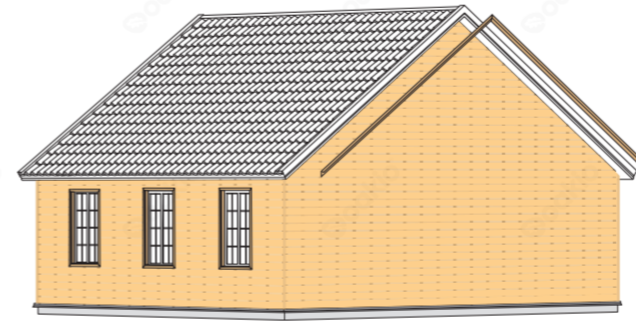


Oakio Cladding Installation Instructions - Horizontal Version

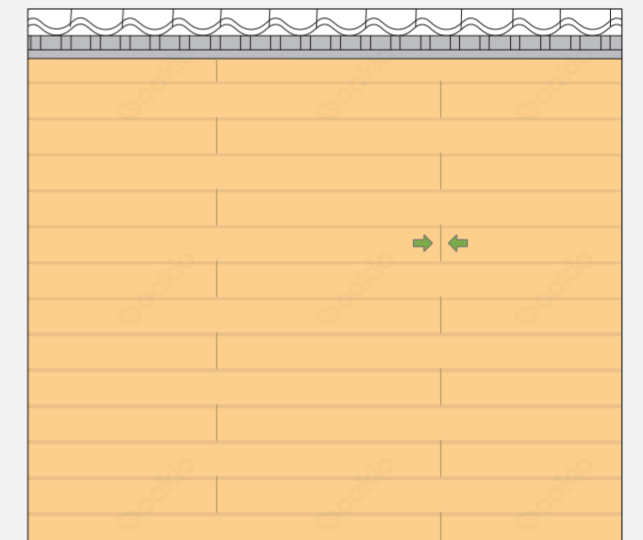
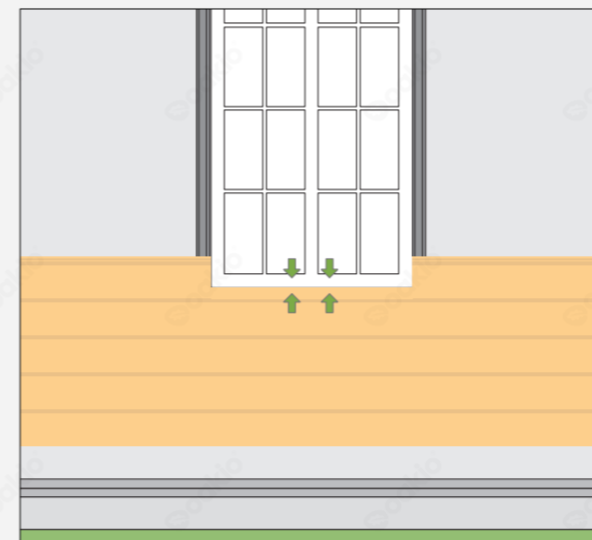
NOTE: IPC04 shown below.



11 Install an L-shaped trim under the roof and fix by screws.



Note



- Cut the cladding to the appropriate size to complete the joint section.

- Leave at least a 3 mm gap between connected boards.

Oakio Cladding Installation Instructions - Horizontal Version

NOTE: IPC04 shown below.



Scallop Cladding

Note



- Trims are not required for inner corners. You can simply install the panel crosswise. Ensure there are two joists underneath.