

**Oakio Plastic Wood Building
Materials Co.,Ltd.**

36th floor, Building 3, Huamao Building, No.11
Wenchang 1st Road, Huizhou, Guangdong, China
Tel: +86 (752) 2222-845
Web:www.oakio.com
Email:info@oakio.com



V20210531

WPC Cladding

Installation Guide



FIND
US ON



V20210531

Read All Sections Before You Install

To get latest information,
please visit our website: [www. Oakio.com](http://www.Oakio.com).

These installation guidelines will direct you through the process of installing Oakio products. These installation methods are recommended by Oakio, but they may not cover every installation scenario you may encounter. Since each installation is unique in its performance requirements, the ultimate installation method used is the sole responsibility of the installer. Oakio recommends that all designs be reviewed by a licensed architect, engineer or local building official before installation. Make sure your plans meet local building codes before you begin the installation.

Safety

Appropriate safety equipment is necessary when you deal with any type of construction project. Oakio highly recommends, but is not limited to the following safety equipment: gloves, a respiratory protection, long sleeves, pants, and safety glasses.

Planning Ahead

To determine how much Oakio cladding material you will need, start by calculating the square footage of your wall surface by multiplying length by width. When calculating the amount of cladding you will need, it is recommended that you add roughly 10% to the total for a scrap factor. A layout for your cladding should be planned before starting installation to ensure the best possible looking cladding for your project. Building codes and zoning ordinances generally apply to permanent structures, meaning anything that is anchored to the ground or attached to the house. So nearly every kind of cladding requires permits and inspections from a local building department. We recommend drawing out a site plan of your proposed project that you intend to do to minimize errors and make your perfect wall cladding.

Expansion and Contraction

Oakio cladding planks will experience expansion and contraction with changes in temperature. Expansion and contraction are most significant where extreme temperature changes occur. Changes in length are most significant during the installation process, and should be taken into account if working in extreme temperatures. A good example would be cutting your planks during a hot afternoon, letting them sit outside overnight in the cool air and then installing them the next morning, and you will notice a certain amount of contraction. The best way to minimize this problem is to fasten your planks after cutting as soon as possible.

Read All Sections Before You Install

To get latest information, please visit our website: [www. Oakio.com](http://www.Oakio.com).

Environment

You need a clean, smooth, flat and strong surface to install Oakio products. Make sure your plans meet local building codes before installing any type of cladding if installation is not that urgent.

Tools

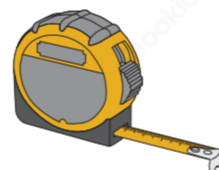
The tools you need for this installation are illustrated below:



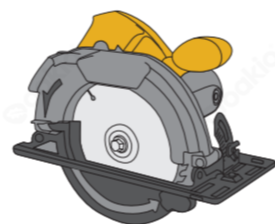
Electric Drill



Guiding Rule



Tape Measure



Saw

Note

1. The trims we provide are not indispensable. You can determine your own trims according to your preference.
2. Joists must be installed before installing cladding in order to ensure safety.
3. Pre-drill by electric drill on wpc boards at every exact location where screws should be fixed.
4. Screws are required for every connection of cladding. It is recommended that more screws should be prepared.

Clips



Fixing Clip

Code: AM07 [B-5]
Size: 40 x 20mm
Depth of slot: 5mm

Read All Sections Before You Install

To get latest information, please visit our website: [www. Oakio.com](http://www.Oakio.com).

Profiles



Proshield cladding


Model: 
Code: PPC01
Size: 140x13mm
Suitable clip: AM07-B-5

Trim

● Note: You can determine your own trim according to your preference.



Proshield trim

Model: 
Code: PPF01
Size: 71x11mm



Proshield trim

Model: 
Code: PPF02
Size: 140x11mm

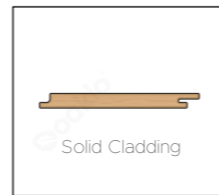


Proshield trim

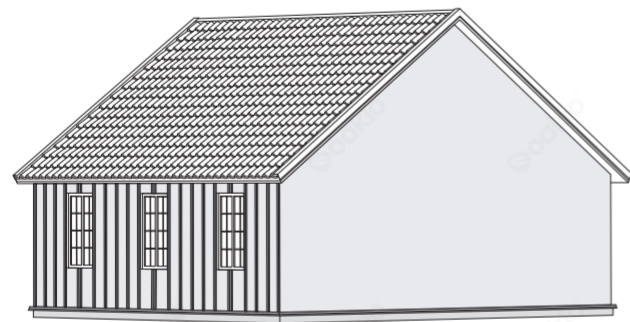
Model: 
Code: PPF03
Size: 50x50mm

Oakio Cladding Installation Instructions - Solid Cladding

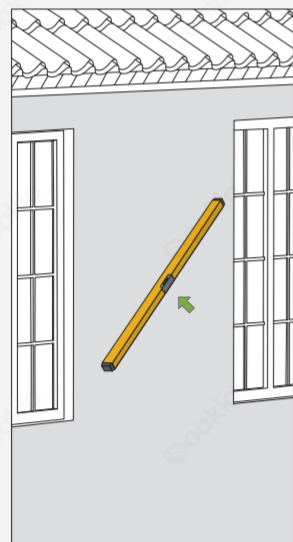
NOTE: PPC01 shown below.



1 Install joists at 40cm on center. Fix the joists with expansion screws.



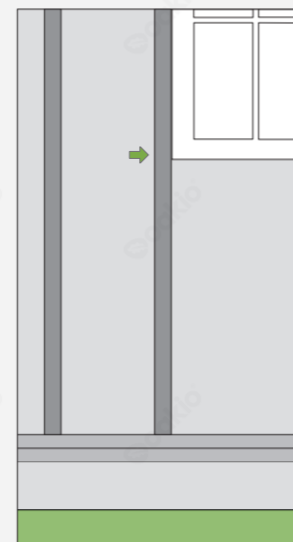
Note



- Make sure the wall is flat. (You can also use a laser level.)



- When window is encountered during installation, you need two pieces of joists.



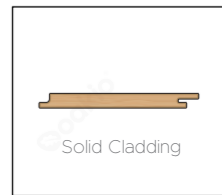
- Make sure that there is a joist next to the window side.



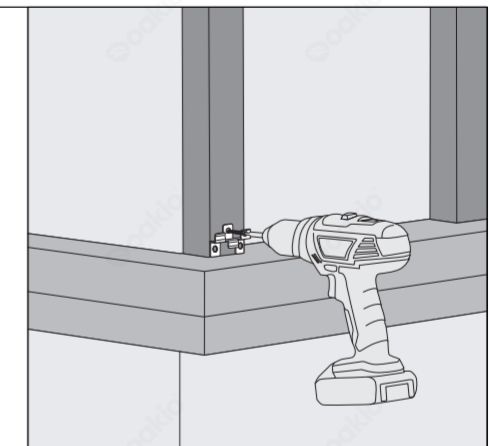
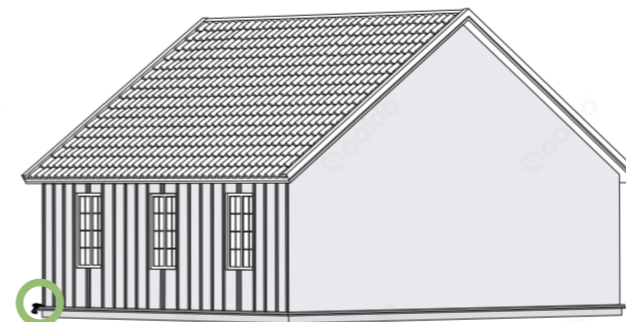
- Double joist for the corner. You can choose wooden joist and aluminum joist

Oakio Cladding Installation Instructions - Solid Cladding

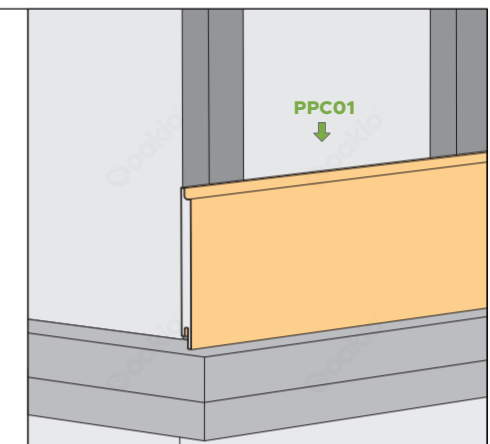
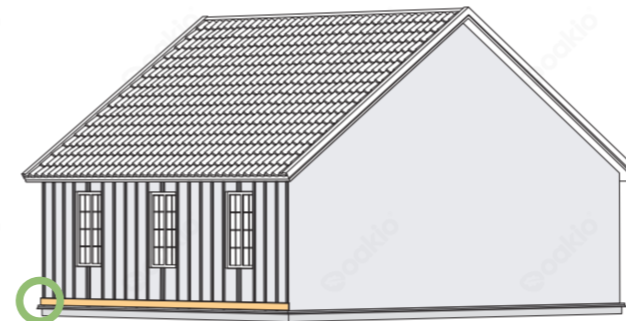
NOTE: PPC01 shown below.



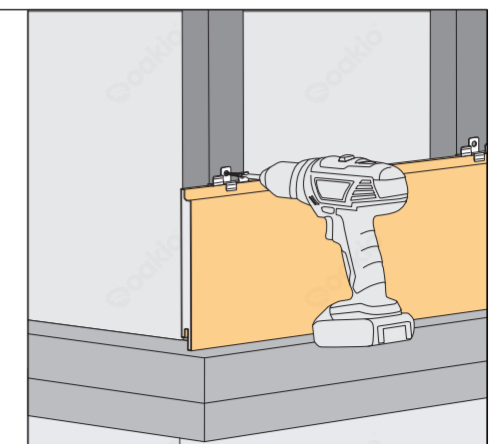
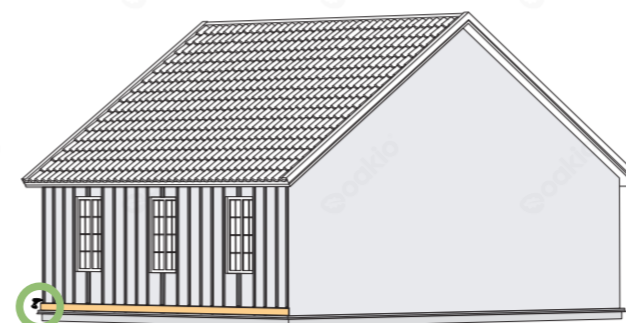
2 Fix the starter clip at every joist at the bottom.



3 Put the first piece of cladding on starter clip.

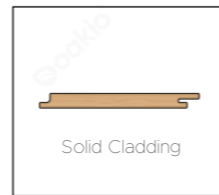


4 Fasten fixing clips to the cladding and joists. Fix by screws.

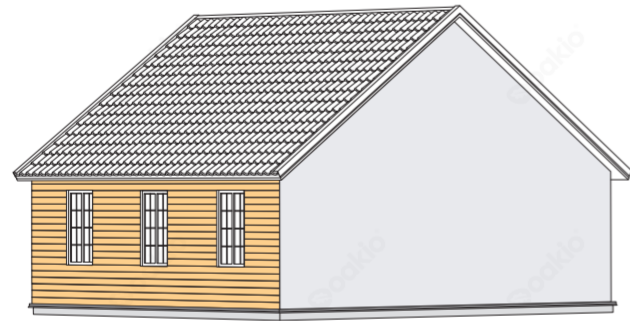


Oakio Cladding Installation Instructions - Solid Cladding

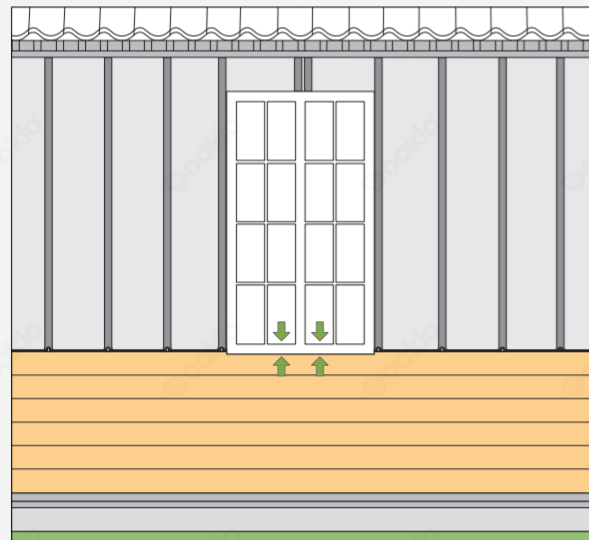
NOTE: PPC01 shown below.



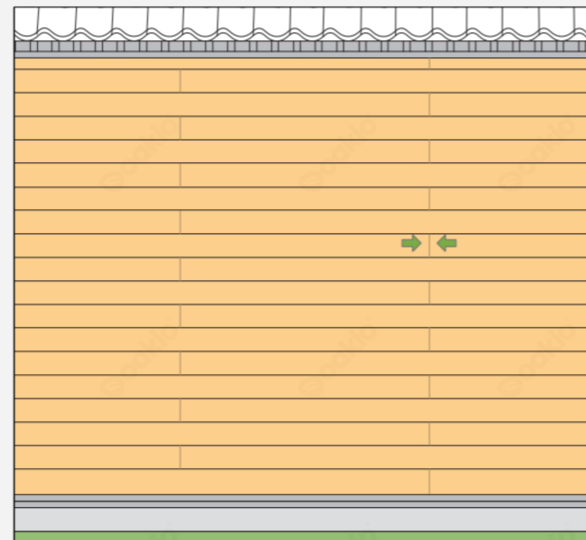
5 Keep installing cladding as above instruction 3 & 4



Note



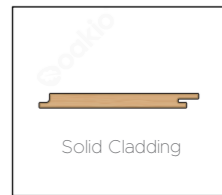
- Cut the cladding of appropriate size to finish the joint part.



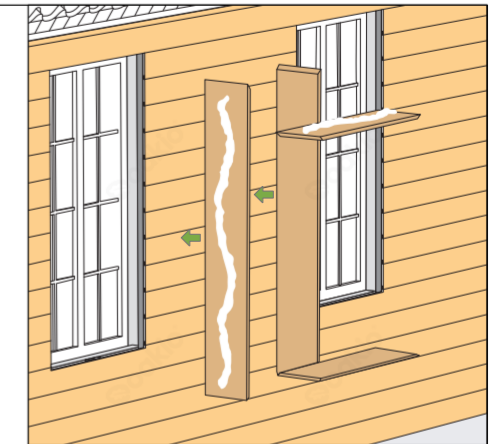
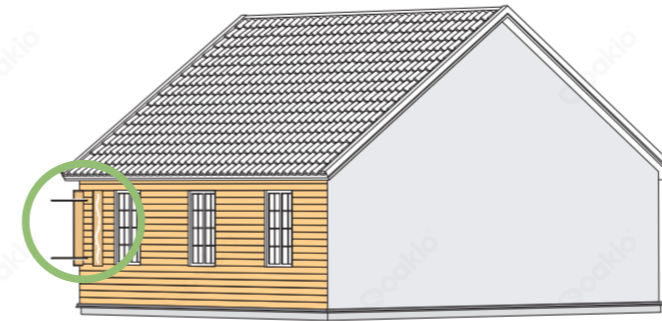
- Remain at least 3mm gap between board connection.

Oakio Cladding Installation Instructions - Solid Cladding

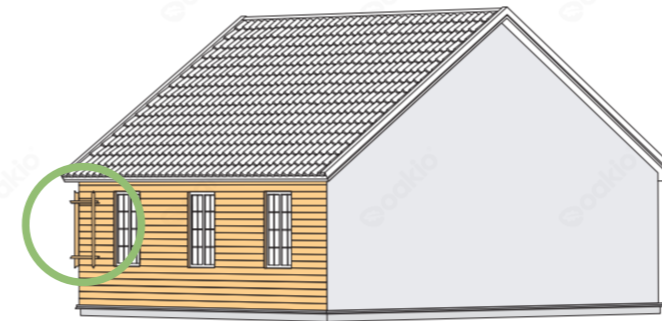
NOTE: PPC01 shown below.



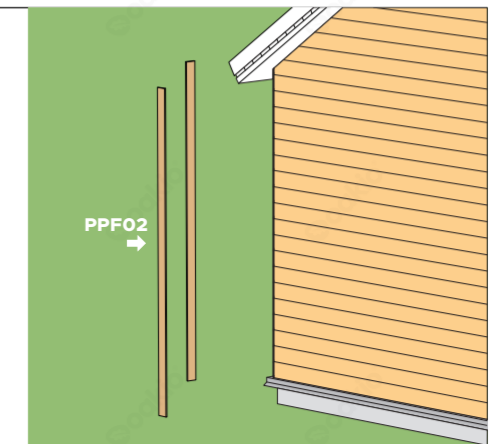
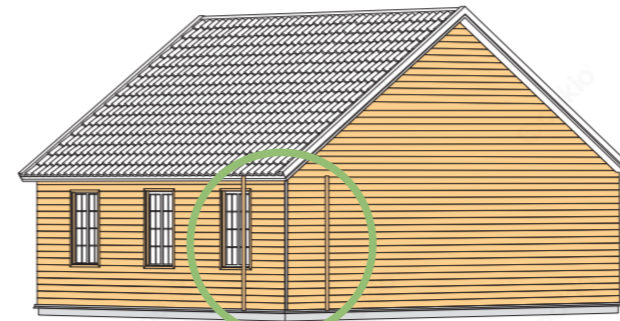
6 Before installing, pad suitable boards for window frame with Styrofoam. Fix the boards on the wall.



7 Install L trim to cover the gap between window frame and cladding. Fix by stainless steel screws.

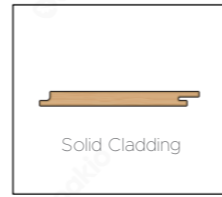


8 Install a L trim or two solid trims if there is an external corner. Fix by stainless steel screws.

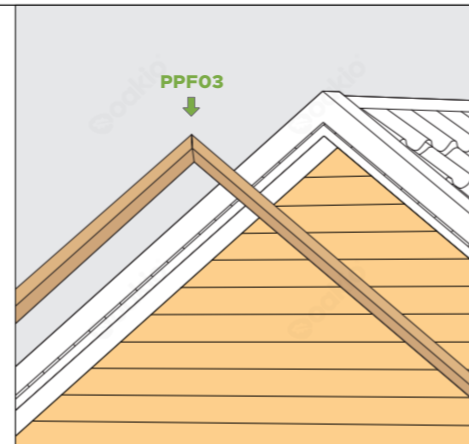
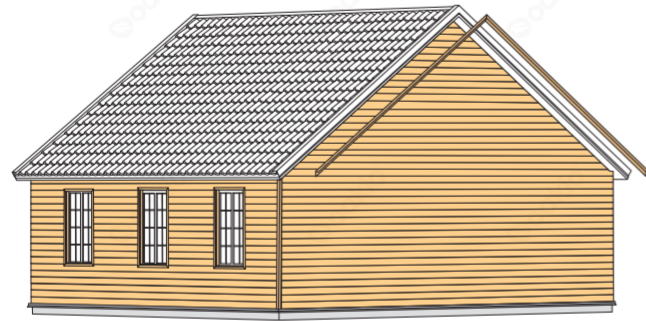


Oakio Cladding Installation Instructions - Solid Cladding

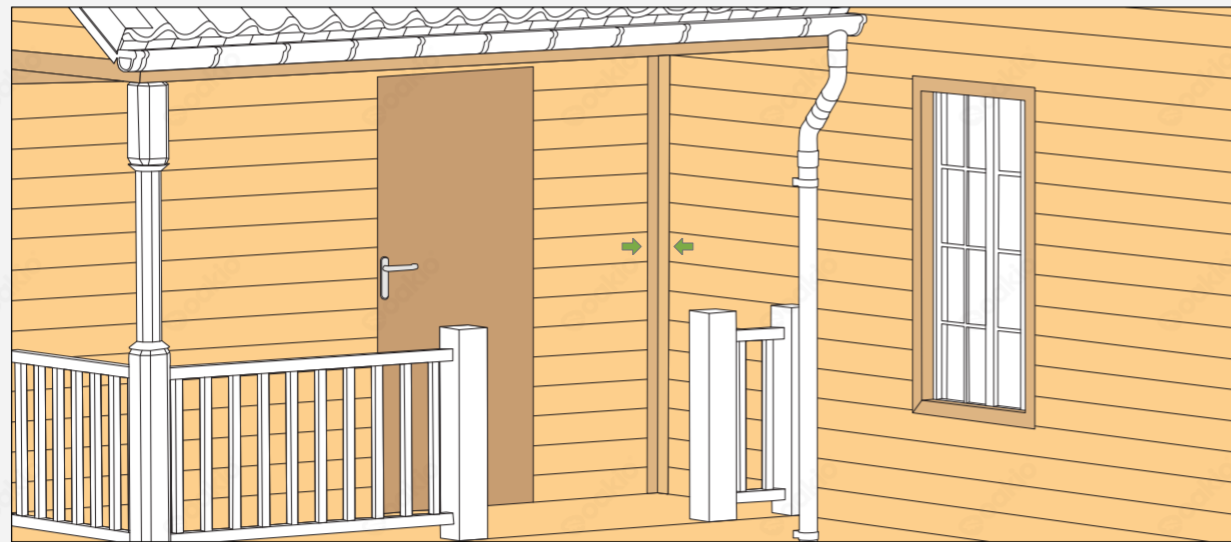
NOTE: PPC01 shown below.



9 Install L trim under the roof and fix by screws.



Note



• Trim is dispensable for inter corners. You can either choose a L-shape trim or two solid trims.